

Ian Barker

From: "The roof access and walkway team at Metalcraft Engineering" <ian@metalcraft.co.nz>
To: <ian@metalcraft.co.nz>
Sent: Friday, 27 April 2012 3:52 p.m.
Subject: Metalcraft Architects Newsletter April 2012

METALCRAFT

Innovation by Design

NEWS



A RANGE OF SAFETY ROOF WALKWAY & ACCESS LADDER SOLUTIONS

Edition 8 : April 2012



This months news

Who is Metalcraft Engineering Co Ltd?

[Click here.](#)

What's this newsletter for?

[Click here](#)

Where can I find further information
on Metalcraft Roof walkway
and access products?

[Click here](#)



How do I contact someone to discuss
an idea or project I have?

Click [Bryn](#) or [Ian](#)

Feb 22 - 14 months on



This time last year Metalcraft Engineering Co Ltd was helping Christchurch customers and staff recover from the catastrophic earthquake and aftershocks. In April 2011 the aftershocks were all too regular! We were fortunate that our building had been strengthened and repaired following the September quakes, and our facility was relatively unscathed. Our ongoing thanks are to our staff who have endured significant hardships, but have battled on and ensured that the company continued operating and serving our customers in a very difficult period in our 20+ year history.

Ian's thoughts



Welcome to our new Newsletter format!



Where can I view the past newsletters?

[Click here](#)

What else does Metalcraft do?

Architectural metalwork -

[Click here](#)



External balustrades and posts -

[Click Here](#)



Internal balustrades and posts -

[Click Here](#)



Handrails -

[Click Here](#)



Canopies -

[Click Here](#)



Windbreaks -

[Click Here](#)



Roof Access -

[Click here](#)



Bike Racks -

[Click here](#)

We are always looking for ways to make your job easier with Aluminium roof access and walkway systems, and metalworking solutions.

We have enjoyed hearing how you enjoy reading the monthly newsletter in the older format and we have heard that with the new smart phones many are reading it while away from the office. This new format will make this process easier, as you can see at a glance what is new and important to you, and you can click through for more news as required.

We will be adding more information and photos to our web pages and you will see some new video posts being used over the next couple of months.

As always, we need your feedback so please let me know your views on this new format ian@metalcraft.co.nz

Over the past month we've seen considerable change within some of our markets. We too at Metalcraft Engineering are going through changes to improve our position and service to you. Many of these changes will be rolled out over the next few months to allow Bryn and I to spend more time with our customers and prospects.

On a personal note, things are moving on here in Christchurch.

Carolyn and I have come to grips with the damage to our house and we're living a more normal life this year than at this time last year. It was great to get some long hot sunny days over Easter which we enjoyed in the outdoors near Havelock.

Take care, Regards Ian Barker, Director ian@metalcraft.co.nz

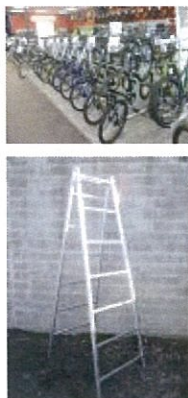
Roof Walkway systems

Metalcraft Engineering specialises in aluminium roof access and walkway systems. We use componentry and systems available from both Juralco and Ullrich. In addition we own 18 aluminium dies which we use in our solutions to create the right look, functionality and pricepoint for our clients.

We believe that aluminium roof access and walkway systems will receive greater popularity in the rebuild of Christchurch due to their lightweight construction, safety, durability and longevity. The following photos show some examples of walkway systems we've installed. These sites also had extensive ladder and access systems incorporated into the overall solution.

Builders Trestles

[Click here](#)



Glass factory handling -

[Click Here](#)



Glass

Transportation -

[Click here](#)



Window Equipment -

[Click here](#)



Site installation equipment -

[Click here](#)



Join us on



ViewMetalcraft videos on Youtube

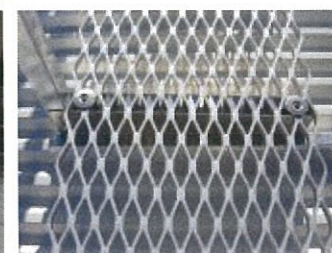


Our company strengths ..

1. We spend time with our customers designing innovative solutions which do what our customers want, and what we say they will

For more information [Click Here](#) to email one of our team.

International update



2. Our metalworking fabrication equipment is quality and high tech
3. We have a range of factory staff including highly qualified and skilled tradesman and apprentices to suit each job

How can I subscribe others in my company?

[Click here](#)

SUBSCRIBE

How can I unsubscribe?

[Click Here](#)

UNSUBSCRIBE

We've had continued success in the Australian market which does not seem to have been so effected by the global economic downturn as the likes of the USA. That said, Australia has their challenges which hopefully they'll keep ahead of. The exchange rate and lower-cost freight tend to make our products price attractive in this market. We've also been active with our UK partner and look forward to winning work in that market.

Product Announcement

Van fitouts, utes, trucks and trailers

Since Christmas we've built tipper trucks, multi-purpose trailers, fitted out vans, and put commercial roofbars and goalposts on utes, for contractors. Most of the work has come from businesses which are already busy and can see their business growing over the next few years. If this sounds like you, and you'd like to talk through a plan for expansion and/or upgrades to your fleet and equipment please call us anytime. We can help design and tailormade solutions for architects and building designers including racks for specific tools and machinery. We can meet at your site, or you can come to our facility on Wairakei Road and get a better feel for what we do. The following vehicles have all been built recently and all include one-off design elements in terms of retention systems, bearing surfaces, shelving, storage, and/or metalworking features :



Quote of the month

"The fruits of life fall into the hands of those who climb the tree and pick them."

Earl Tupper, inventor of Tupperware



We hope you enjoyed this first newsletter in our new format!

We hope you enjoy this April 2012 newsletter.
Please see [our web](#) site for more product and company information.

Metalcraft Engineering Coy Ltd

This email was sent to you to keep you up to date with Metalcraft Engineering Co Ltd. If you would like to unsubscribe from this newsletter (we will miss you!), [click here](#)

_____ NOD32 7089 (20120426) Information _____

This message was checked by NOD32 antivirus system.
<http://www.eset.com>